

Kolín 350 Lx

Project Code:20250715-002
Size of total area: 106mX71.3m
Lamp:16pcs
Mounting Height:16m
Maintenance Factor:0.90
Calculation Grid Eave:354Lux,Uo:0.64
GR < 50

The calculation values are based on precise calculations performed on calibrated lamps and luminaires, and their configurations, where by gradual, unavoidable deviations can occur in practice. All guarantee claims are excluded for the specified data. This exclusion of liability applies irrespective of the legal grounds for both damages and consequential damages suffered by users and third parties.

Partner for Contact:
Order No.:
Company:
Customer No.:

Date: 18.07.2025
Operator:



Operator
Telephone
Fax
e-Mail

Table of contents

Project 1

Project Cover	1
Table of contents	2

Stadium 2

Planning data	3
Luminaire parts list	4
Luminaires (coordinates list)	5
Pole Positions (Coordinates List)	7
Sport Luminaires (Coordinates List)	8
GR Observer (Results Overview)	10
3D Rendering	12
False Colour Rendering	13

Exterior Surfaces

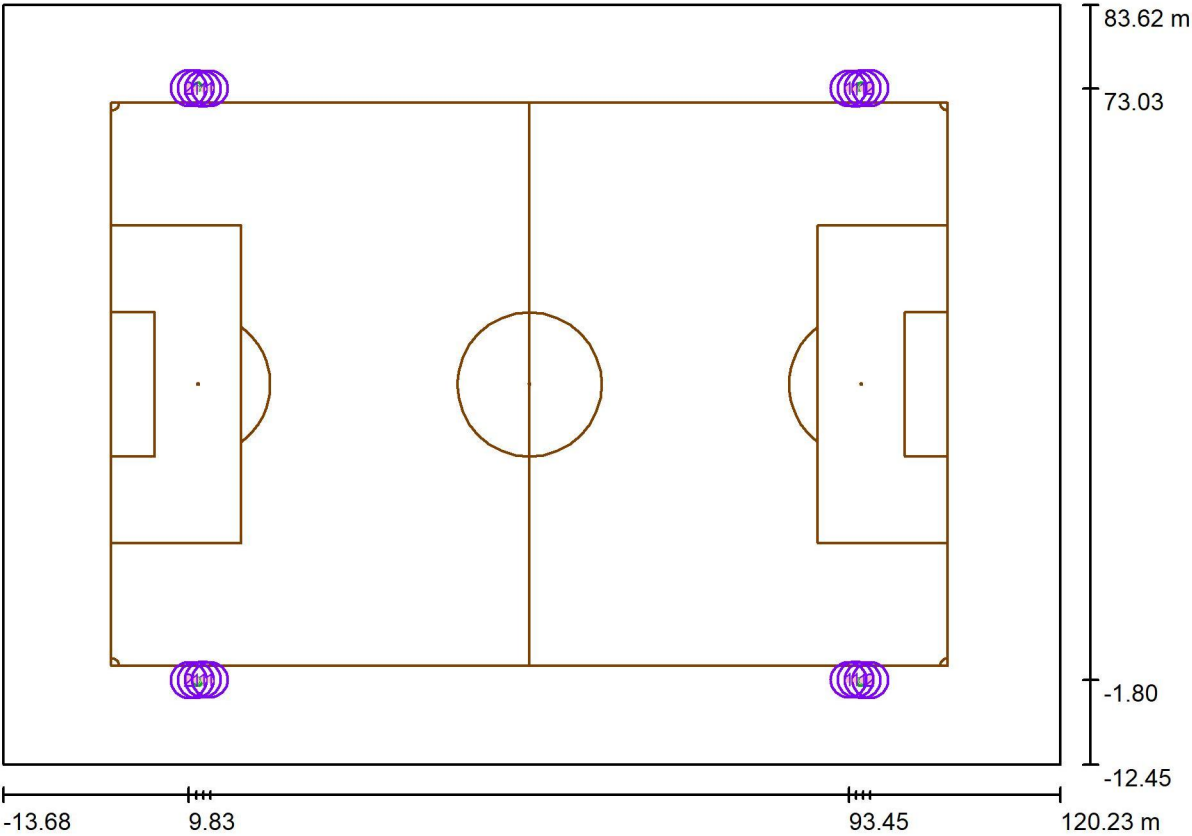
Soccer Field 1 Calculation Grid (PA)

Value Chart (E, Perpendicular)	14
--------------------------------	----



Operator
Telephone
Fax
e-Mail

Stadium 2 / Planning data



Maintenance factor: 0.90, ULR (Upward Light Ratio): 7.5% Scale 1:958

Luminaire Parts List

No.	Pieces	Designation (Correction Factor)	Φ (Luminaire) [lm]	Φ (Lamps) [lm]	P [W]
1	12	SP04-1K8-5770-F04003Z (1.000)	279021	279060	1800.0
2	4	SP04-1K8-5770-F04013X (1.000)	262233	262230	1800.0
Total:			4397182	4397640	28800.0

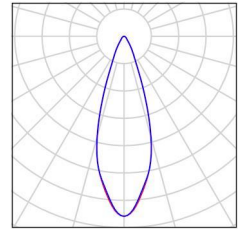


Operator
Telephone
Fax
e-Mail

Stadium 2 / Luminaire parts list

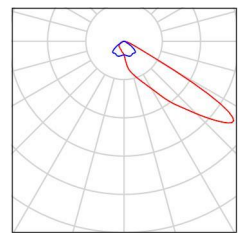
12 Pieces SP04-1K8-5770-F04003Z
Article No.:
Luminous flux (Luminaire): 279021 lm
Luminous flux (Lamps): 279060 lm
Luminaire Wattage: 1800.0 W
Luminaire classification according to CIE: 100
CIE flux code: 90 97 99 100 100
Fitting: 1 x / (Correction Factor 1.000).

See our luminaire
catalog for an image of
the luminaire.



4 Pieces SP04-1K8-5770-F04013X
Article No.:
Luminous flux (Luminaire): 262233 lm
Luminous flux (Lamps): 262230 lm
Luminaire Wattage: 1800.0 W
Luminaire classification according to CIE: 100
CIE flux code: 40 89 99 100 100
Fitting: 1 x / (Correction Factor 1.000).

See our luminaire
catalog for an image of
the luminaire.



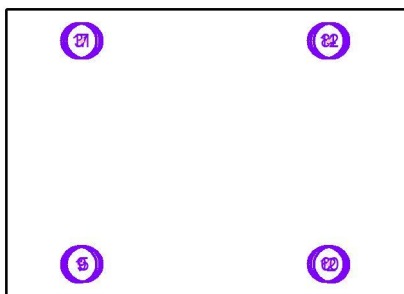


Operator
Telephone
Fax
e-Mail

Stadium 2 / Luminaires (coordinates list)

SP04-1K8-5770-F04003Z

279021 lm, 1800.0 W, 1 x 1 x / (Correction Factor 1.000).



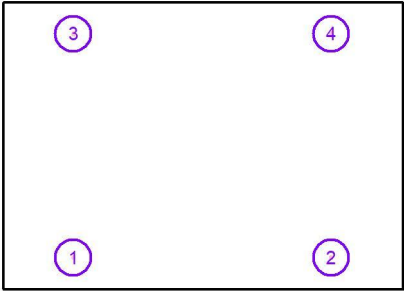
No.	Position [m]			Rotation [°]		
	X	Y	Z	X	Y	Z
1	10.760	-1.800	16.000	0.0	-67.0	80.5
2	95.240	-1.800	16.000	0.0	-67.0	99.5
3	10.760	73.100	16.000	0.0	-67.0	-80.5
4	95.240	73.100	16.000	0.0	-67.0	-99.5
5	12.555	-1.765	16.000	0.0	-69.0	17.0
6	93.445	-1.765	16.000	0.0	-69.0	163.0
7	12.555	73.065	16.000	0.0	-69.0	-17.0
8	93.445	73.065	16.000	0.0	-69.0	-163.0
9	11.658	-1.729	16.000	0.0	-71.0	45.0
10	94.342	-1.729	16.000	0.0	-71.0	135.0
11	11.658	73.029	16.000	0.0	-71.0	-45.0
12	94.342	73.029	16.000	0.0	-71.0	-135.0



Operator
Telephone
Fax
e-Mail

Stadium 2 / Luminaires (coordinates list)

SP04-1K8-5770-F04013X
262233 lm, 1800.0 W, 1 x 1 x / (Correction Factor 1.000).

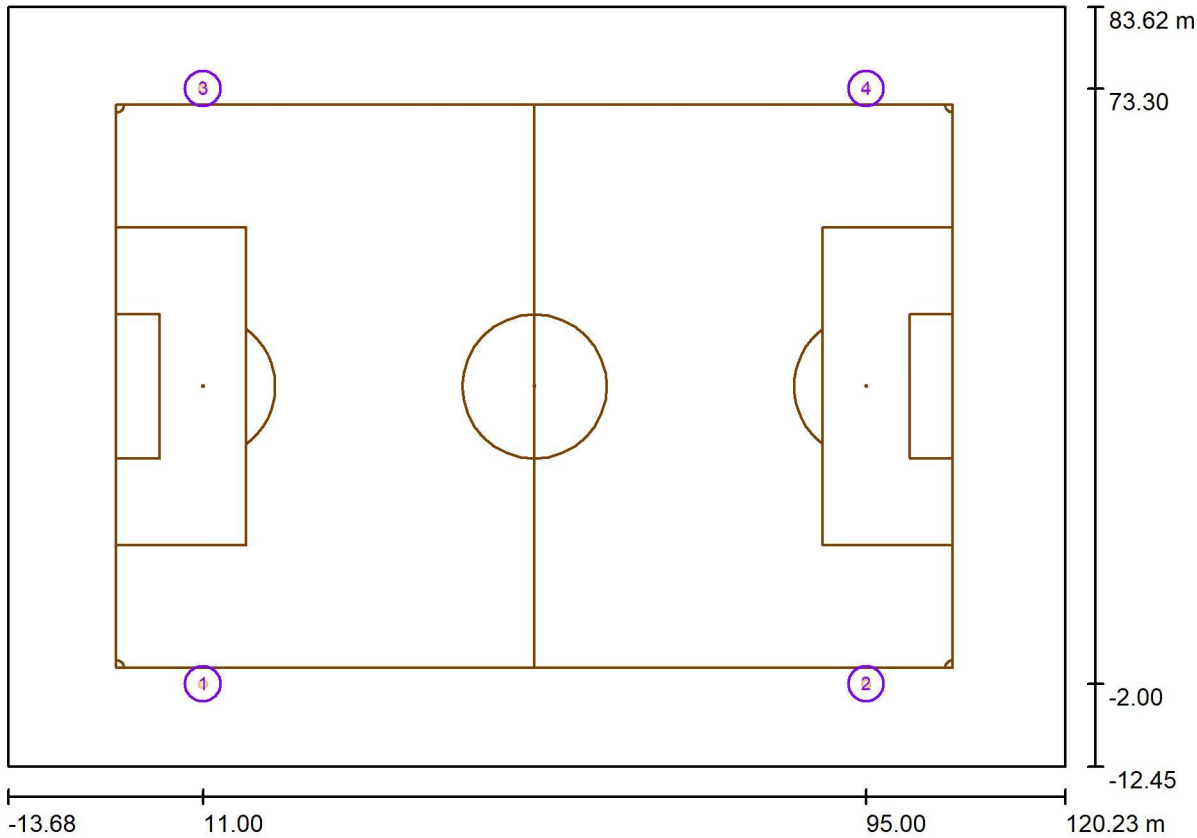


No.	Position [m]			Rotation [°]		
	X	Y	Z	X	Y	Z
1	9.827	-1.800	16.000	0.0	-9.5	95.0
2	96.173	-1.800	16.000	0.0	-9.5	85.0
3	9.827	73.100	16.000	0.0	-9.5	-95.0
4	96.173	73.100	16.000	0.0	-9.5	-85.0



Operator
Telephone
Fax
e-Mail

Stadium 2 / Pole Positions (Coordinates List)



Scale 1 : 958

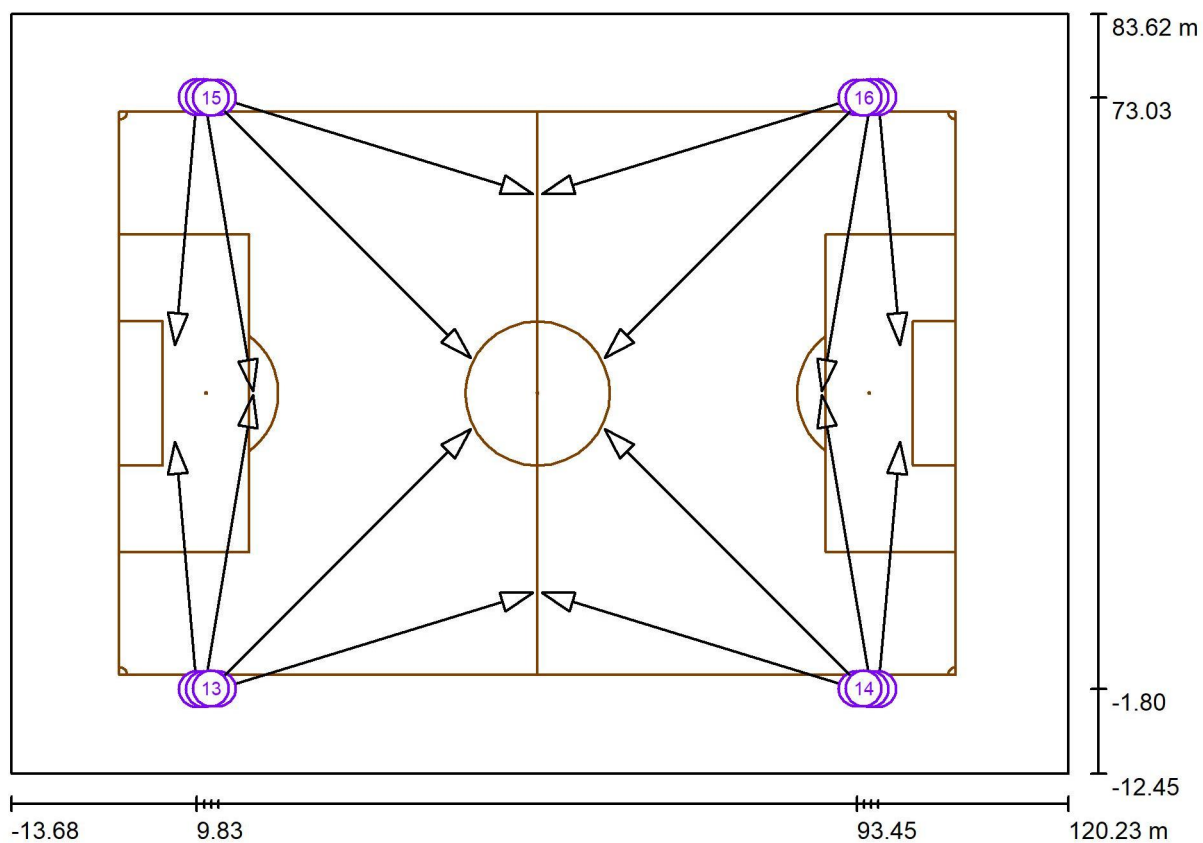
List of the Pole Positions

No.	Designation	Position [m]		
		X	Y	Z
1	Pole Position 1	11.000	-2.000	0.000
2	Pole Position 2	95.000	-2.000	0.000
3	Pole Position 3	11.000	73.300	0.000
4	Pole Position 4	95.000	73.300	0.000



Operator
Telephone
Fax
e-Mail

Stadium 2 / Sport Luminaires (Coordinates List)



Scale 1 : 958

List of the Sport Luminaires

Luminaire	Index	Position [m]			Aiming Point [m]			Angle [°]	Alignment	Pole
		X	Y	Z	X	Y	Z			
SP04-1K8-5770-F04013X	1	9.827	-1.800	16.000	7.090	29.482	0.000	27.0	(C 0, G IMax)	/
SP04-1K8-5770-F04013X	2	96.173	-1.800	16.000	98.910	29.482	0.000	27.0	(C 0, G IMax)	/
SP04-1K8-5770-F04013X	3	9.827	73.100	16.000	7.090	41.818	0.000	27.0	(C 0, G IMax)	/
SP04-1K8-5770-F04013X	4	96.173	73.100	16.000	98.910	41.818	0.000	27.0	(C 0, G IMax)	/



Operator
Telephone
Fax
e-Mail

Stadium 2 / Sport Luminaires (Coordinates List)

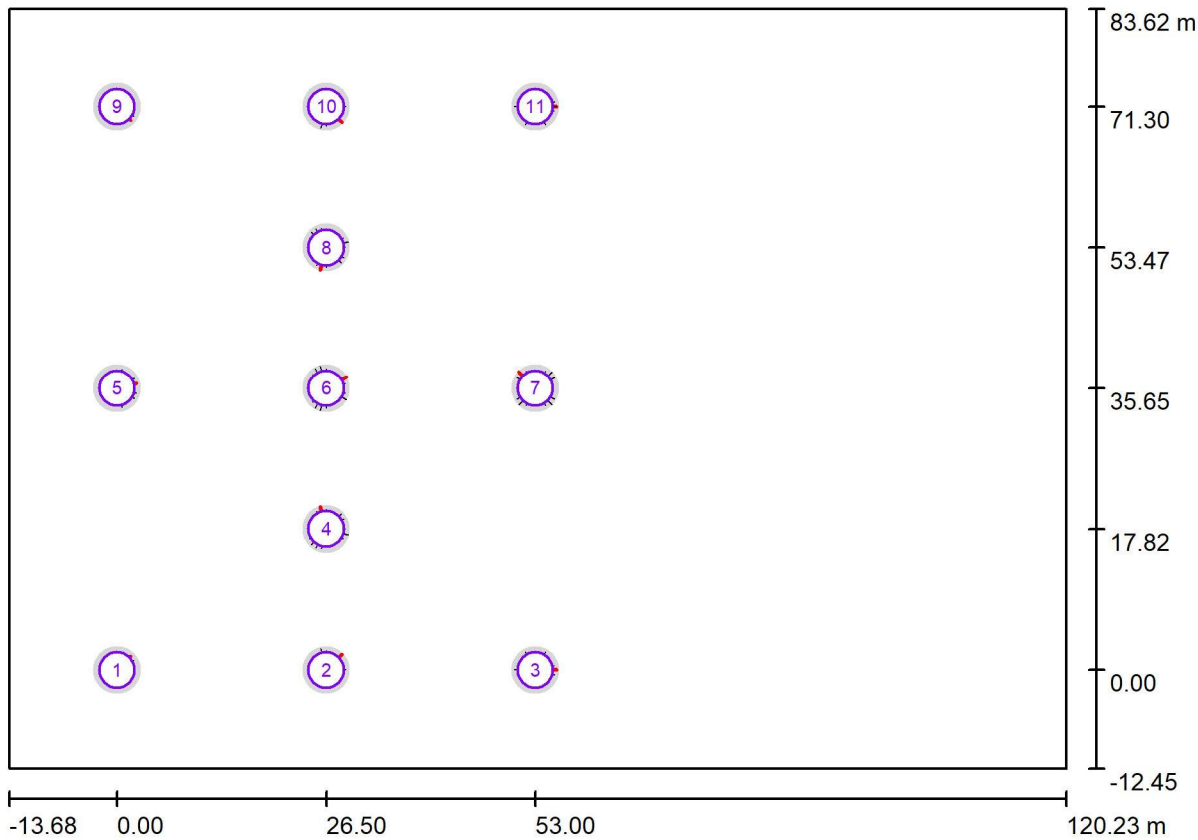
List of the Sport Luminaires

Luminaire	Index	Position [m]			Aiming Point [m]			Angle [°]	Alignment	Pole
		X	Y	Z	X	Y	Z			
SP04-1K8-5770-F04003Z	5	10.760	-1.800	16.000	16.981	35.377	0.000	23.0	(C 0, G IMax)	Pole Position 1
SP04-1K8-5770-F04003Z	6	95.240	-1.800	16.000	89.019	35.377	0.000	23.0	(C 0, G IMax)	Pole Position 2
SP04-1K8-5770-F04003Z	7	10.760	73.100	16.000	16.981	35.923	0.000	23.0	(C 0, G IMax)	Pole Position 3
SP04-1K8-5770-F04003Z	8	95.240	73.100	16.000	89.019	35.923	0.000	23.0	(C 0, G IMax)	Pole Position 4
SP04-1K8-5770-F04003Z	9	12.555	-1.765	16.000	52.415	10.421	0.000	21.0	(C 0, G IMax)	/
SP04-1K8-5770-F04003Z	10	93.445	-1.765	16.000	53.585	10.421	0.000	21.0	(C 0, G IMax)	/
SP04-1K8-5770-F04003Z	11	12.555	73.065	16.000	52.415	60.879	0.000	21.0	(C 0, G IMax)	/
SP04-1K8-5770-F04003Z	12	93.445	73.065	16.000	53.585	60.879	0.000	21.0	(C 0, G IMax)	/
SP04-1K8-5770-F04003Z	13	11.658	-1.729	16.000	44.515	31.128	0.000	19.0	(C 0, G IMax)	/
SP04-1K8-5770-F04003Z	14	94.342	-1.729	16.000	61.485	31.128	0.000	19.0	(C 0, G IMax)	/
SP04-1K8-5770-F04003Z	15	11.658	73.029	16.000	44.515	40.172	0.000	19.0	(C 0, G IMax)	/
SP04-1K8-5770-F04003Z	16	94.342	73.029	16.000	61.485	40.172	0.000	19.0	(C 0, G IMax)	/



Operator
Telephone
Fax
e-Mail

Stadium 2 / GR Observer (Results Overview)



Scale 1 : 958

GR Observerlist

No.	Designation	Position [m]			Viewing sector [°]			Slope angle	Max
		X	Y	Z	Start	End	Increment		
1	GR Observer 1	0.000	0.000	1.000	0.0	360.0	15.0	-2.0	40 ²⁾
2	GR Observer 2	26.500	0.000	1.000	0.0	360.0	15.0	-2.0	46 ²⁾
3	GR Observer 3	53.000	0.000	1.000	0.0	360.0	15.0	-2.0	44 ²⁾
4	GR Observer 4	26.500	17.825	1.000	0.0	360.0	15.0	-2.0	48 ²⁾



Operator
Telephone
Fax
e-Mail

Stadium 2 / GR Observer (Results Overview)

GR Observerlist

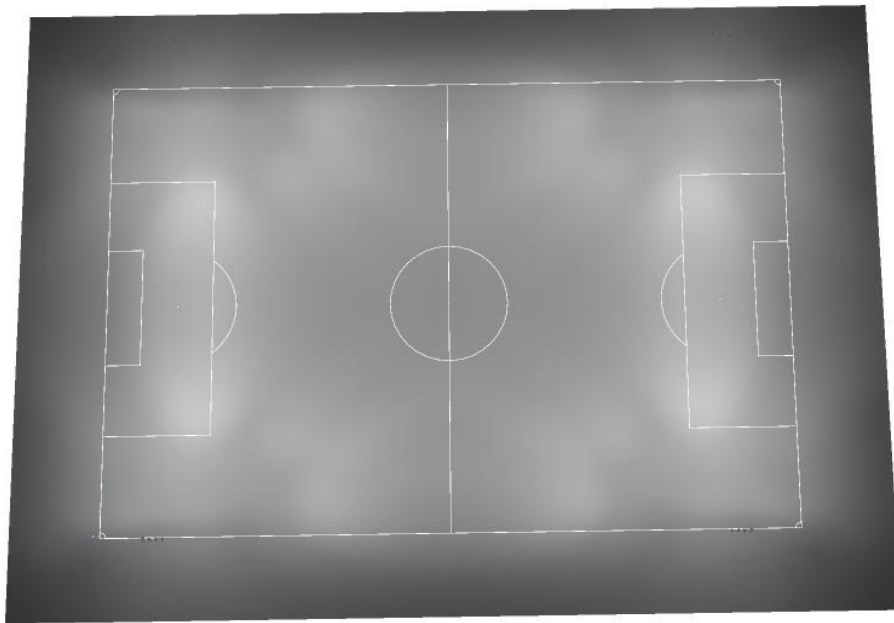
No.	Designation	Position [m]			Start	Viewing sector [°]			Slope angle	Max
		X	Y	Z		End	Increment			
5	GR Observer 5	0.000	35.650	1.000	0.0	360.0	15.0		-2.0	42 ²⁾
6	GR Observer 6	26.500	35.650	1.000	0.0	360.0	15.0		-2.0	48 ²⁾
7	GR Observer 7	53.000	35.650	1.000	0.0	360.0	15.0		-2.0	49 ²⁾
8	GR Observer 8	26.500	53.475	1.000	0.0	360.0	15.0		-2.0	48 ²⁾
9	GR Observer 9	0.000	71.300	1.000	0.0	360.0	15.0		-2.0	40 ²⁾
10	GR Observer 10	26.500	71.300	1.000	0.0	360.0	15.0		-2.0	46 ²⁾
11	GR Observer 11	53.000	71.300	1.000	0.0	360.0	15.0		-2.0	44 ²⁾

2) The calculated equivalent veil luminance of the environment is based on the assumption of a complete diffuse reflection behavior of the environment (acc. EN 12464-2).



Operator
Telephone
Fax
e-Mail

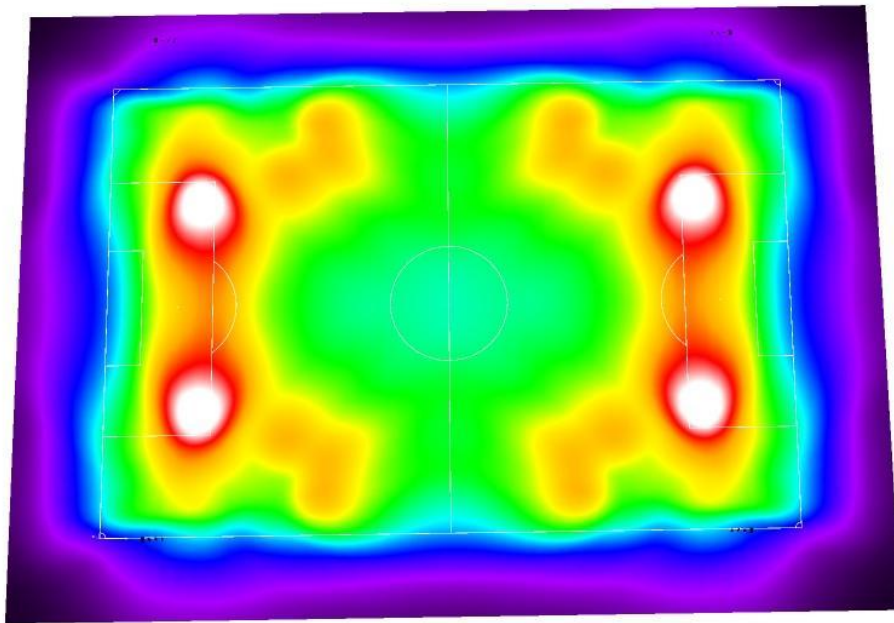
Stadium 2 / 3D Rendering





Operator
Telephone
Fax
e-Mail

Stadium 2 / False Colour Rendering

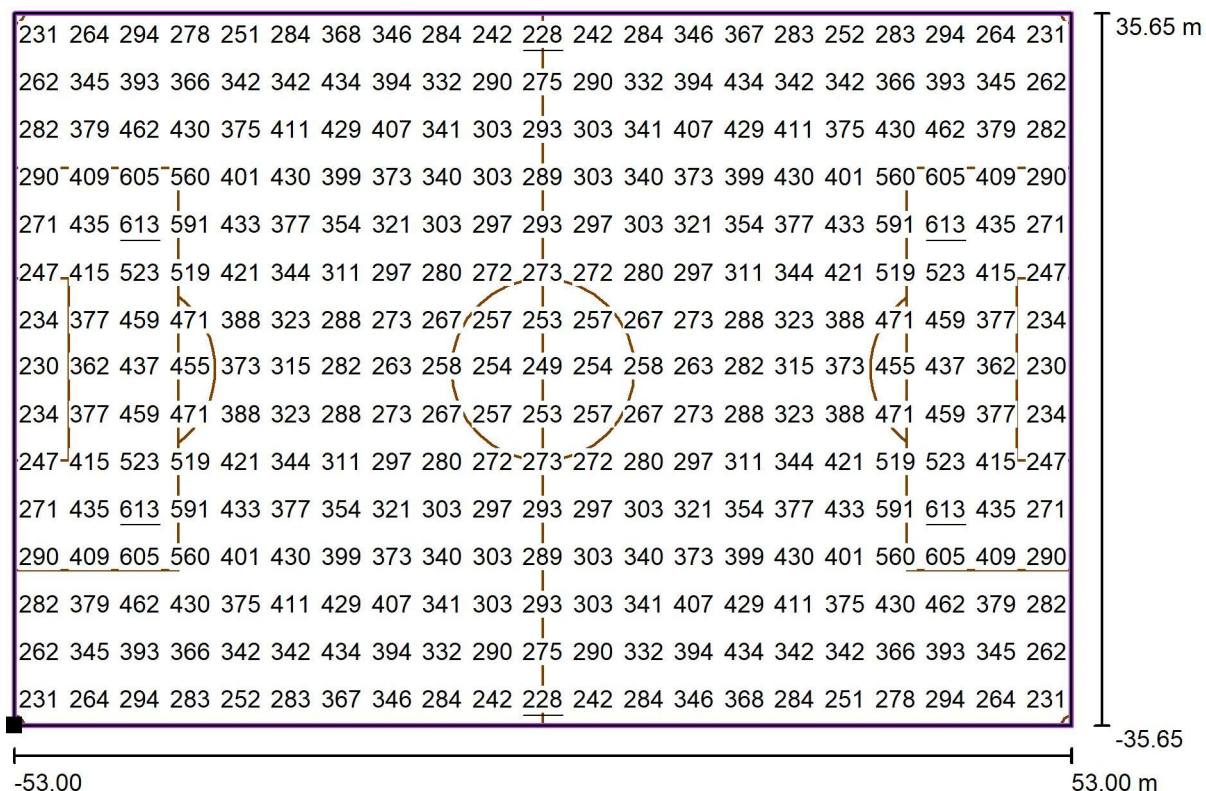


0 75 150 225 300 375 450 525 600 lx



Operator
Telephone
Fax
e-Mail

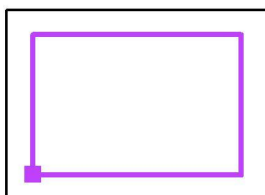
Stadium 2 / Soccer Field 1 Calculation Grid (PA) / Value Chart (E, Perpendicular)



Values in Lux, Scale 1 : 758

Position of surface in external scene:

Marked point: (0.000 m, 0.000 m, 0.000 m)



Grid: 21 x 15 Points

E_{av} [lx]
354

E_{min} [lx]
228

E_{max} [lx]
613

u_0
0.64

E_{min} / E_{max}
0.37